

Working with our IT & engineering team

About Mathys & Squire

Dedicated to protecting and defending your future.

Mathys & Squire is an intellectual property (IP) powerhouse that puts its specialist knowledge to work for clients, to strengthen and secure what most modern businesses today treat as one of their most valuable strategic assets - intellectual property.

The firm's agile teams of attorneys, scientists and strategists are steeped in experience, working with IP-rich and high-growth industries to leverage complex technologies and sophisticated commercial models across a broad range of industry sectors.

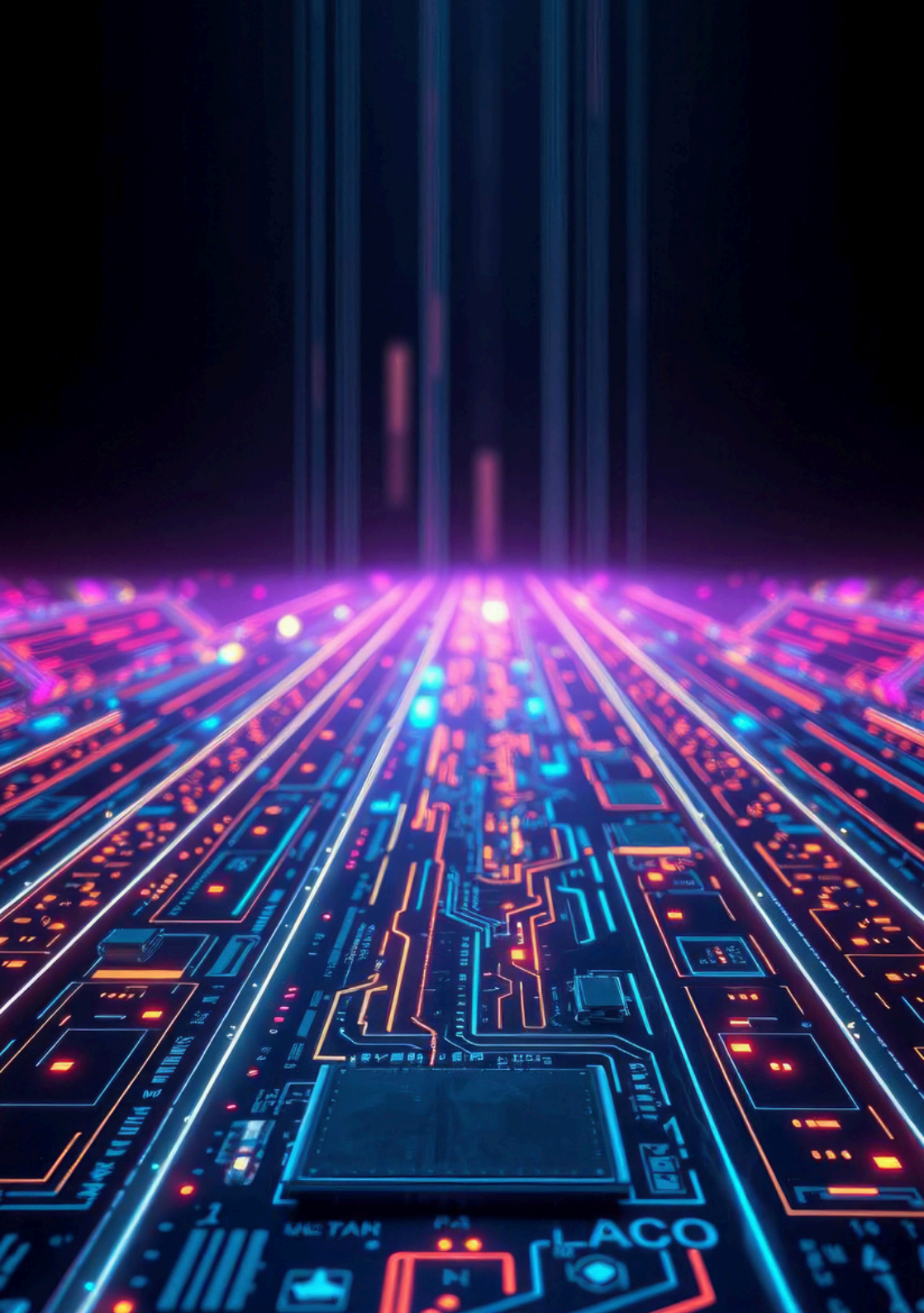
A full-service IP firm, Mathys & Squire has unrivalled expertise in patents, trade marks, design protection and litigation. Highly ranked in leading legal and IP directories, and leading the field with insight, innovation and quality, Mathys & Squire celebrated its 115th Anniversary in 2025, testament to its proven track record in the protection and commercialisation of IP rights.

The firm has a broad spread of clients, ranging from start-ups to major UK and global corporations, many of which are household names. Clients of the firm value its commitment to professional excellence and technical expertise.

Mathys & Squire has over 100 attorneys (both training and qualified) and a dedicated IP consulting team across offices in London, Birmingham, Cambridge, Manchester, Newcastle, Oxford, Luxembourg, Munich and Paris, as well as teams based in China and Japan. The firm's attorneys and trainees have a mix of scientific degrees extending from chemistry, biochemistry, pharmacology, genetics, microbiology, plant sciences and zoology through to physics, electronics, telecommunications and engineering.

We are passionate about creating and delivering innovative, high-quality, client-focused services and building close and longstanding relationships with clients in order to establish defensive and offensive IP portfolios that generate commercial value. We are proactive when working with clients and valued for our integrity, honesty and collegiate approach.

We protect, so that you can invent the future.



Our IT & engineering team

Our IT & engineering team is one of the leading practices in the sector. Our attorneys have unparalleled expertise in this area and work with a wide range of clients, from entrepreneurs, startups, spinouts and SMEs, through to large multinational corporations, research institutions, technology consultancies and universities.

Technical expertise

Our team is well-equipped to support clients in the fast-moving IT & engineering sector, with experience spanning a wide range of industries and technologies, including: aerospace; artificial intelligence (AI) and machine learning; fin-tech; electronics, computing and software; manufacturing, engineering and automotive technology; medical devices; printing; robotics; semiconductors; sports; telecommunications; broadcasting, creative and media technology; and utilities.

The majority of the members of our IT & engineering team hold advanced academic degrees in applicable technical areas, and many have PhDs. Moreover, as well as scientists and engineers with valuable research experience, our team also includes industry veterans who understand the challenges and pressures that clients in these fields experience. Some of our attorneys have been named as inventors on patents themselves, which enables us to offer clients a deeper understanding of the nuances of protecting and commercialising their innovative technology.

Intellectual property expertise

Our IT & engineering team has expertise in all areas of intellectual property (IP), encompassing patent procurement (including invention mining, patent drafting and prosecution), licensing, contentious proceedings (including opposition and appeal cases), freedom to operate opinions, due diligence exercises, transactional matters, and IP portfolio management.

The firm is also experienced in handling trade mark, copyright and design matters on behalf of clients in the IT & engineering sector. We handle litigious matters before the UK Intellectual Property Enterprise Court (IPEC), and have attorneys qualified to litigate before the Patents Court. We also have expertise in negotiating successful outcomes and in mediation.

Our IT & engineering team (cont.)

Our clients

For all our clients, we offer bespoke commercially-valuable advice, that is both technically incisive and legally astute.

In addition to providing a high level of service and expert advice, Mathys & Squire's commercial focus and collaborative approach allows us to effectively support our clients in order to maximise the value of their intellectual property. We offer a full suite of IP services in order to help clients protect their inventions and build their market presence, leverage their IP assets, gain investment, develop strategically, and achieve their commercial objectives.

We take a proactive approach when working with our clients, advising them on a course of action that is best aligned with their business needs. Understanding the commercial value of a new invention or brand is as important as understanding the technology and marketing behind it. Clients value our integrity, honesty, collegiate approach and the robust practical advice we give.

In Europe, for instance in the field of software, we are experienced in handling patent cases that are on the borderline of excluded subject matter, to the extent that the legal issues may be more significant than the nature of the technology itself.

We are prolific in the tech startup community and have a wealth of connections with key accelerators and incubators. We thrive on helping startups on their journey to success, by identifying, protecting and helping to commercialise their IP.

At the other end of the spectrum, we have long-standing relationships within the IT & engineering sector worldwide, and are proud to handle prosecution of a number of substantial portfolios for major multinationals, including several Silicon Valley based corporations and leading Japanese companies.

Examples of our clients include [ABB](#), [Abbott](#), [Ariane Group](#), [AstraZeneca](#), [AVL](#), [BBC](#), [Cambridge Consultants](#), [Cisco](#), [Cook Medical](#), [Intuitive Surgical](#), [Kenwood](#), [Mellanox Technologies](#), [NEC](#), [Square Enix](#) and [Xaar](#).

Meet our team



Partners



Edward Cavanna
Partner
EPCavanna@mathys-squire.com



Matthias Brittinger
Partner
MBrittinger@mathys-squire.com



Nicholas Fox
Partner
NRFox@mathys-squire.com



Adam Gilbertson
Partner
AMGilbertson@mathys-squire.com



Annabel Hector
Partner
AMHector@mathys-squire.com



Dani Kramer
Partner
DKramer@mathys-squire.com



Sean Leach
Partner
SALeach@mathys-squire.com



Alan MacDougall
Partner
AJMacDougall@mathys-squire.com



Andrea McShane
Partner
ARMcShane@mathys-squire.com



Dylan Morgan
Partner
DSMorgan@mathys-squire.com



Catherine Orange
Partner
CLBooth@mathys-squire.com



Oliver Parish
Partner
OJParish@mathys-squire.com

Partners



James Pitchford
Partner
JEPitchford@mathys-squire.com



Jeremy Smith
Partner
JPSmith@mathys-squire.com



Max Thoma
Partner
MHThoma@mathys-squire.com



Caroline Warren
Partner
CEWarren@mathys-squire.com



Andrew White
Partner
AJWhite@mathys-squire.com



Andreas Wietzke
Partner
AMWietzke@mathys-squire.com



Leonard Wright
Partner
LWWright@mathys-squire.com



Jane Clark
Consultant Partner
JAClark@mathys-squire.com



Paul Cozens
Consultant Partner
PDCozens@mathys-squire.com

Managing Associates



Peter Herrick
Managing Associate
PDHerrick@mathys-squire.com



Peter Humby
Managing Associate
PJHumby@mathys-squire.com



Richard Jaszek
Managing Associate
RJaszek@mathys-squire.com



Helen Springbett
Managing Associate
HPSpringbett@mathys-squire.com



Daniel Varley
Managing Associate
DBVarley@mathys-squire.com



Aymeric Vienne
Managing Associate
ACVienne@mathys-squire.com



Markus Von Rudno
Managing Associate
MAVonRudno@mathys-squire.com



William Wathey
Managing Associate
WJWathey@mathys-squire.com

Associates



Michael Charlton
Associate
MCharlton@mathys-squire.com



Liam Gannon
Associate
LAGannon@mathys-squire.com



Sally Gao
Associate and China Liason
SLGao@mathys-squire.com



Daniel Goldberg
Associate
DEGoldberg@mathys-squire.com



Jessie Harrison
Associate
JLHarrison@mathys-squire.com



Greg Jones
Associate
GJones@mathys-squire.com



Oliver Jones
Associate
OGJones@mathys-squire.com



Daniyal Khan
Associate
MDKhan@mathys-squire.com



Daniel Nicholls
Associate
DLNicholls@mathys-squire.com



Susan Riley
Associate
STRiley@mathys-squire.com



Florian Saas
Associate
FSaas@mathys-squire.com



Johannes Zweck
Associate
JZweck@mathys-squire.com

