

Working with our  
IT & engineering  
team

# About Mathys & Squire

***Dedicated to protecting and defending your future.***

**Mathys & Squire is an IP powerhouse that puts its specialist knowledge to work for clients, to strengthen and secure what most modern businesses today treat as one of their most valuable strategic assets - intellectual property.**

The firm's agile teams of attorneys, scientists and strategists are steeped in experience, working with IP-rich and high-growth industries to leverage complex technologies and sophisticated commercial models across a broad range of industry sectors.

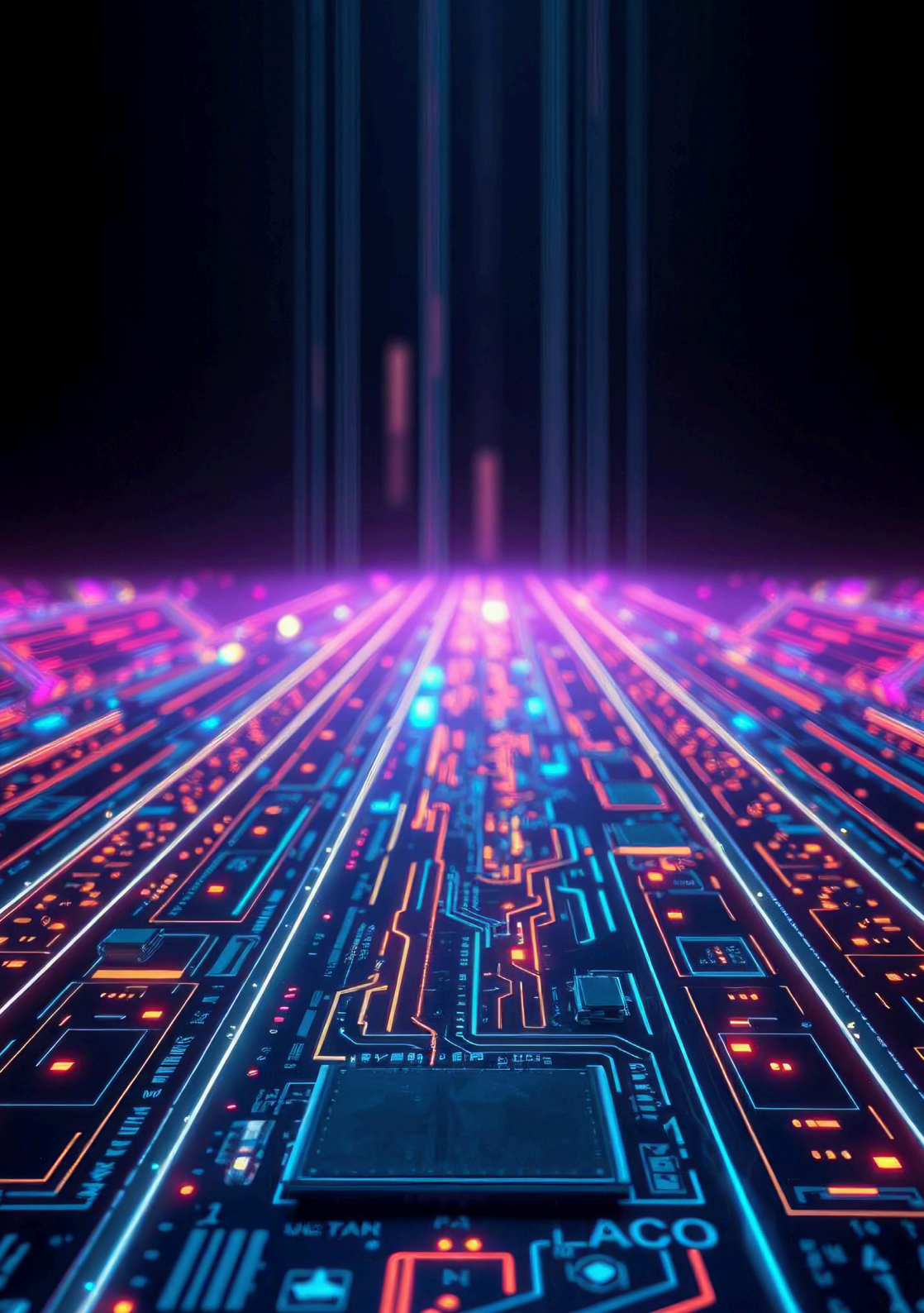
A full-service IP firm, Mathys & Squire has unrivalled expertise in patents, trade marks, design protection and litigation. Highly ranked in leading legal and IP directories, and leading the field with insight, innovation and quality, Mathys & Squire will be celebrating its 115th Anniversary this year, testament to its proven track record in the protection and commercialisation of IP rights.

The firm has a broad spread of clients, ranging from start-ups to major UK and global corporations, many of which are household names. Clients of the firm value its commitment to professional excellence and technical expertise.

Mathys & Squire has over 100 attorneys (both training and qualified) and a dedicated IP consulting team across offices in London, Birmingham, Cambridge, Manchester, Newcastle, Oxford, Luxembourg, Munich and Paris, as well as teams based in Belfast, China and Japan. The firm's attorneys and trainees have a mix of scientific degrees extending from chemistry, biochemistry, pharmacology, genetics, microbiology, plant sciences and zoology through to physics, electronics, telecommunications and engineering.

We are passionate about creating and delivering innovative, high-quality, client-focused services and building close and longstanding relationships with clients in order to establish defensive and offensive IP portfolios that generate commercial value. We are proactive when working with clients and valued for our integrity, honesty and collegiate approach.

***We protect, so that you can invent the future.***



## Our IT & engineering team

Our IT & engineering team is one of the leading practices in the sector. Our attorneys have unparalleled expertise in this area and work with a wide range of clients, from entrepreneurs, startups, spinouts and SMEs, through to large multinational corporations, research institutions, technology consultancies and universities.

### Technical expertise

Our team is well-equipped to support clients in the fast-moving IT & engineering sector, with experience spanning a wide range of industries and technologies, including: aerospace; artificial intelligence (AI) and machine learning; fin-tech; electronics, computing and software; manufacturing, engineering and automotive technology; medical devices; printing; robotics; semiconductors; sports; telecommunications; broadcasting, creative and media technology; and utilities.

The majority of the members of our IT & engineering team hold advanced academic degrees in applicable technical areas, and many have PhDs. Moreover, as well as scientists and engineers with valuable research experience, our team also includes industry veterans who understand the challenges and pressures that clients in these fields experience. Some of our attorneys have been named as inventors on patents themselves, which enables us to offer clients a deeper understanding of the nuances of protecting and commercialising their innovative technology.

### Intellectual property expertise

Our IT & engineering team has expertise in all areas of intellectual property (IP), encompassing patent procurement (including invention mining, patent drafting and prosecution), licensing, contentious proceedings (including opposition and appeal cases), freedom to operate opinions, due diligence exercises, transactional matters, and IP portfolio management.

The firm is also experienced in handling trade mark, copyright and design matters on behalf of clients in the IT & engineering sector. We handle litigious matters before the UK Intellectual Property Enterprise Court (IPEC), and have attorneys qualified to litigate before the Patents Court. We also have expertise in negotiating successful outcomes and in mediation.

## Our IT & engineering team (cont.)

### Our clients

For all our clients, we offer bespoke commercially-valuable advice, that is both technically incisive and legally astute.

In addition to providing a high level of service and expert advice, Mathys & Squire's commercial focus and collaborative approach allows us to effectively support our clients in order to maximise the value of their intellectual property. We offer a full suite of IP services in order to help clients protect their inventions and build their market presence, leverage their IP assets, gain investment, develop strategically, and achieve their commercial objectives.

We take a proactive approach when working with our clients, advising them on a course of action that is best aligned with their business needs. Understanding the commercial value of a new invention or brand is as important as understanding the technology and marketing behind it. Clients value our integrity, honesty, collegiate approach and the robust practical advice we give.

In Europe, for instance in the field of software, we are experienced in handling patent cases that are on the borderline of excluded subject matter, to the extent that the legal issues may be more significant than the nature of the technology itself.

We are prolific in the tech startup community and have a wealth of connections with key accelerators and incubators. We thrive on helping startups on their journey to success, by identifying, protecting and helping to commercialise their IP.

At the other end of the spectrum, we have long-standing relationships within the IT & engineering sector worldwide, and are proud to handle prosecution of a number of substantial portfolios for major multinationals, including several Silicon Valley based corporations and leading Japanese companies.

Examples of our clients include [ABB](#), [Abbott](#), [Ariane Group](#), [AstraZeneca](#), [AVL](#), [BBC](#), [Cambridge Consultants](#), [Cisco](#), [Cook Medical](#), [Intuitive Surgical](#), [Kenwood](#), [Mellanox Technologies](#), [NEC](#), [Square Enix](#) and [Xaar](#).

# Meet our team



# Partners



**Catherine Booth**  
Partner  
CLBooth@mathys-squire.com



**Edward Cavanna**  
Partner  
EPCavanna@mathys-squire.com



**Paul Cozens**  
Partner  
PDCozens@mathys-squire.com



**Nicholas Fox**  
Partner  
NRFox@mathys-squire.com



**Annabel Hector**  
Partner  
AMHector@mathys-squire.com



**Dani Kramer**  
Partner  
DKramer@mathys-squire.com



**Sean Leach**  
Partner  
SALeach@mathys-squire.com



**Alan MacDougall**  
Partner  
AJMacDougall@mathys-squire.com



**Andrea McShane**  
Partner  
ARMcShane@mathys-squire.com



**James Pitchford**  
Partner  
JEPitchford@mathys-squire.com



**Jeremy Smith**  
Partner  
JPSmith@mathys-squire.com



**Max Thoma**  
Partner  
MHThoma@mathys-squire.com

## Partners



---

**Caroline Warren**  
Partner  
[CEWarren@mathys-squire.com](mailto:CEWarren@mathys-squire.com)



---

**Andrew White**  
Partner  
[AJWhite@mathys-squire.com](mailto:AJWhite@mathys-squire.com)



---

**Andreas Wietzke**  
Partner  
[AMWietzke@mathys-squire.com](mailto:AMWietzke@mathys-squire.com)



---

**Jane Clark**  
Consultant Partner  
[JAClark@mathys-squire.com](mailto:JAClark@mathys-squire.com)

# Managing Associates



**Adam Gilbertson**  
Managing Associate  
[AMGilbertson@mathys-squire.com](mailto:AMGilbertson@mathys-squire.com)



**Richard Jaszek**  
Managing Associate  
[RJaszek@mathys-squire.com](mailto:RJaszek@mathys-squire.com)



**Dylan Morgan**  
Managing Associate  
[DSMorgan@mathys-squire.com](mailto:DSMorgan@mathys-squire.com)



**Oliver Parish**  
Managing Associate  
[OJParish@mathys-squire.com](mailto:OJParish@mathys-squire.com)



**Aymeric Vienne**  
Managing Associate  
[ACVienne@mathys-squire.com](mailto:ACVienne@mathys-squire.com)



**Markus Von Rudno**  
Managing Associate  
[MAVonRudno@mathys-squire.com](mailto:MAVonRudno@mathys-squire.com)



**Leonard Wright**  
Managing Associate  
[LWWright@mathys-squire.com](mailto:LWWright@mathys-squire.com)

## Associates



**Christopher Ashcroft**

Associate

[CAshcroft@mathys-squire.com](mailto:CAshcroft@mathys-squire.com)



**Michael Charlton**

Associate

[MCharlton@mathys-squire.com](mailto:MCharlton@mathys-squire.com)



**Liam Gannon**

Associate

[LAGannon@mathys-squire.com](mailto:LAGannon@mathys-squire.com)



**Sally Gao**

Associate

[SLGao@mathys-squire.com](mailto:SLGao@mathys-squire.com)



**Daniel Goldberg**

Associate

[DEGoldberg@mathys-squire.com](mailto:DEGoldberg@mathys-squire.com)



**Jessie Harrison**

Associate

[JLHarrison@mathys-squire.com](mailto:JLHarrison@mathys-squire.com)



**Peter Humby**

Associate

[PJHumby@mathys-squire.com](mailto:PJHumby@mathys-squire.com)



**Greg Jones**

Associate

[GJones@mathys-squire.com](mailto:GJones@mathys-squire.com)



**Daniel Nicholls**

Associate

[DLNicholls@mathys-squire.com](mailto:DLNicholls@mathys-squire.com)



**Florian Saas**

Associate

[FSaas@mathys-squire.com](mailto:FSaas@mathys-squire.com)



**Helen Springbett**

Associate

[HPSpringbett@mathys-squire.com](mailto:HPSpringbett@mathys-squire.com)



**Daniel Varley**

Associate

[DBVarley@mathys-squire.com](mailto:DBVarley@mathys-squire.com)



**William Wathey**

Associate

[WJWathey@mathys-squire.com](mailto:WJWathey@mathys-squire.com)



**Johannes Zweck**

Associate

[JZweck@mathys-squire.com](mailto:JZweck@mathys-squire.com)



